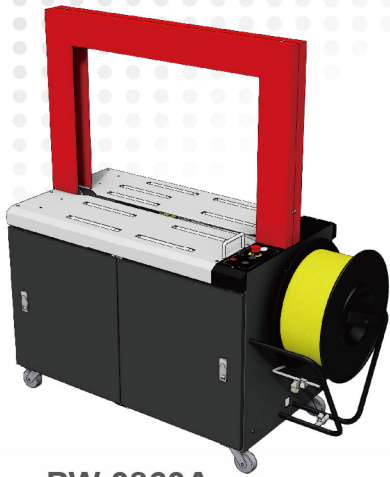
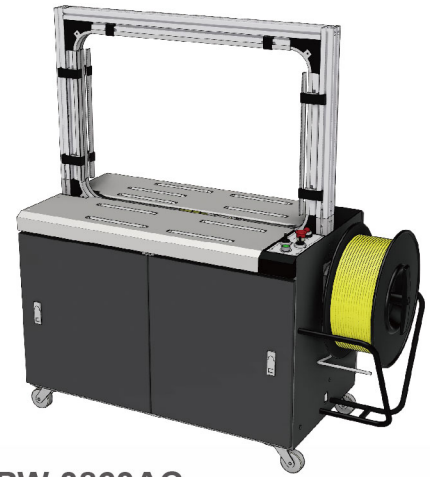


## Automatic Models



PW-0860A

- Options**
- 36 straps/min.
  - (PW-0860A1, 3/AC1, 3) : PCB control
  - Detection for strap not in position
  - Detection for no strap
  - Stainless steel structure SUS #304
  - Single phase (1Ø)



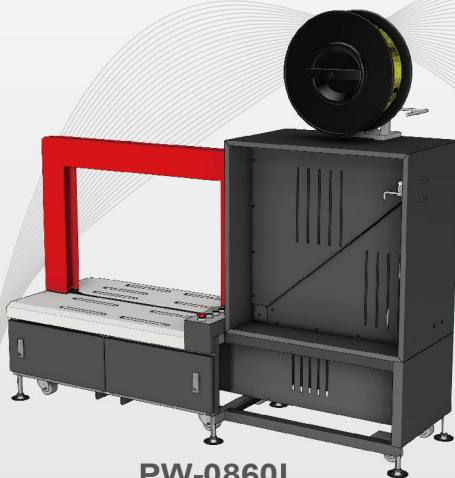
PW-0860AC

**PW-0860A/ PW-0860AC Automatic Strapping Machine**

A: Machine Frame with Steel Arch

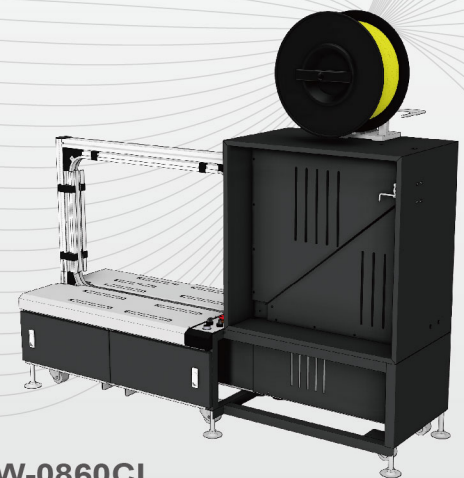
AC: Machine Frame with Aluminum Arch

Power	3Ø, 220/380/415/440V, 50/60Hz
Standard Arch Size	W 850 x H 600 mm (other sizes made on request)
Strap Width	9, 12, 15,19 mm (PET option)
Strapping Tension	0 ~ 70 Kgs
Strapping Speed	2.4 sec./strap (25 strap/min.)
Table Height	810 mm
Machine Size	L 1440 x W 640 x H 1535 mm



PW-0860L

- Options**
- Ball table top
  - Detection for strap not in position
  - Detection for no strap
  - Stainless steel structure SUS #304
  - Single phase (1Ø)



PW-0860CL

**PW-0860L/PW-0860CL Automatic Strapping Machine**

L: Steel Arch in Low Profile

CL: Aluminum Arch in Low Profile

Power	3Ø, 220/380/415/440V, 50/60Hz
Standard Arch Size	W 850 x H 600 mm (other sizes made on request)
Strap Width	9, 12, 15,19 mm (PET option)
Strapping Tension	0 ~ 70 Kgs
Strapping Speed	2.4 sec./strap (25 strap/min.)
Table Height	450 mm
Machine Size	L 1900 x W 640 x H 1764 mm