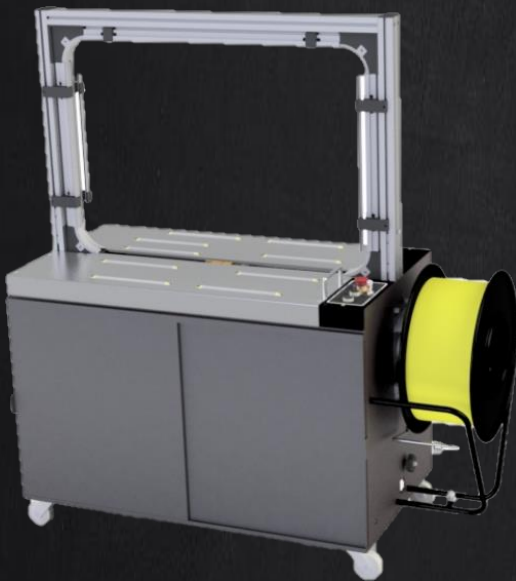
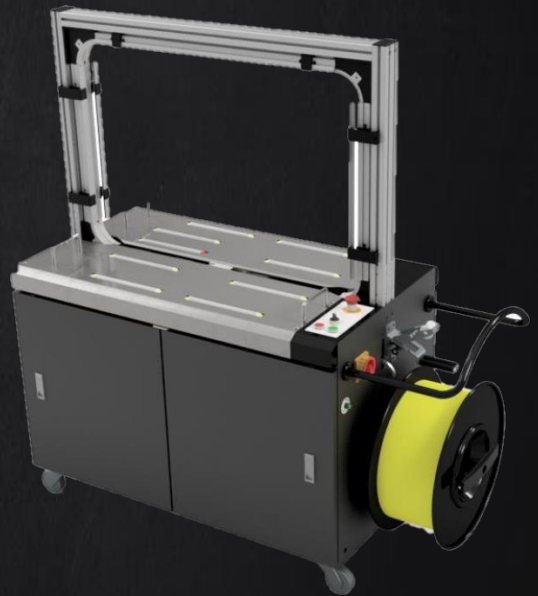


# *Automatic Strapping Machine*



*PW-0860AC*

Standard Model



*PW-0860CAT*

Standard Model with  
Auto Strap Threading

## Simple & Reliable

### # Aluminum Arch

- **Increase strapping accuracy**

Reduce turn over strap, or tilted band position.

- **Lightness**

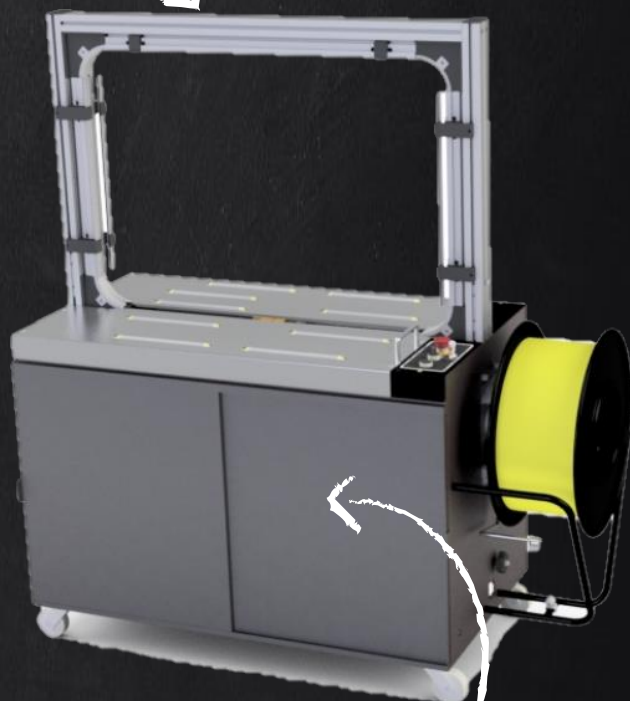
2 times lighter than the Steel Arch, much easier for handling.

- **Flexible**

Modular extension, designed for the unexpected events; such as adding of extra height or to replace a damaged section of the arch.

- **Easy maintenance**

Easier to change wearable parts than the Steel Arch.



### # PWI Standard Strapping Head

- **Double cams**

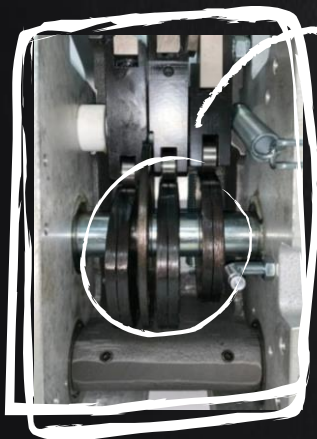
Gives even contact surface with the constantly moving parts such as bearings for long lasting operation.

- **Heating Element (new type)**

Made in Stainless steel, it is suitable for PP and PET strap use. It requires less initial heating time than original heater plate.

- **Reliable feed shooter**

Reinforced structure at 6 most frequently contacted points by strap feeding and reserving. Ensure far longer lasting operation without the need of replace for a new one from wear, saving your time and money.



※ All specifications are subject to change without notice.

Version 2020.

# PW-0860CAT



## User Friendly

### # One Button Push

To open the band way and clear unwanted straps inside when situation requires.

### # User Friendly Adjustment

- Take-up Time (T1): The operator can adjust strap reverse time according to different package size to improve efficiency.
- Cooling Time (T2): The operator can adjust the timer it needs on the press blade to improve strap sealing joint.
- Electrical strap tension

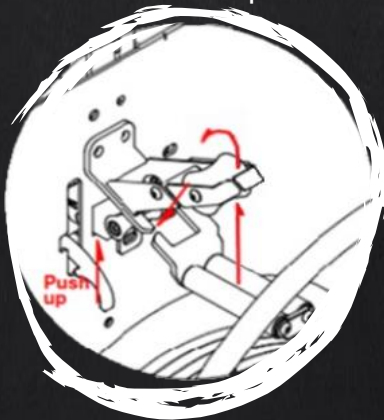
### # Automatic Strap Feeding / Re-feeding

The strap feeds through the Aluminum arch automatically from the side once engaged. It will also detects whether the strap is in position. If not, it will **re-feed the strap twice**.



### # Electromagnetic Dispenser Brake

Controlled precisely by PLC, different than the belt brake, it doesn't require mechanical adjustment for the release of the brake when feeding strap into spool.



### # Automatic Strap Threading

Automatic strap threading system improves productivity and waist height coil change becomes much easier and faster than before.



### # Auto Loop Ejection

The CAT will not become idle in case of strapping without a product. The strap makes a circle loop and ejects from the strapping head.

※ All specifications are subject to change without notice.

Version 2020.



# Comparison Table

		PW- 0860AC	PW- 0860CAT
Specification	Power Supply	3Ø : 220V / 380V / 415V / 440V, 50/60Hz	
	Strapping Head	PWI StandardType	
	PP band width (mm)	9,12,15,19	
	Strap Welding Method	Heater Transformer and <b>Stainless Steel</b> Heating Element	
	Strapping Tension Range	Up to 70(kg)	
	Strapping Speed (cycles/min)	25	28
	Working Height	810 (mm), 31.9 (in)	
	Max load weight	40kg	
	Load dimension (mm)	Min. W100 X H30 ~ Max. W650 X H500	
	Net Weight	219(kg), 481.8(lbs.)	
Features	Control Type	Logic Relay Circuit	PLC
	Strap Dispenser Brake	Belt	Electromagnetic
	Tension Adjustment	Mechanical	Electrical
	Customized Arch Size	O	O
	Foot Switch	O	O
	Access doors with safety switches	O	O
	Strap Auto-Threading	X	O
	Auto Re-feed	X	O
	Auto loop-ejection	X	O
	LCD Strapping cycle counter	X	O
	Option: Stainless Steel Frame / Pneumatic Press Top	O	O
	Table Top Option : Flat / Ball / Roller	O	O

※ All specifications are subject to change without notice.

Version 2020.